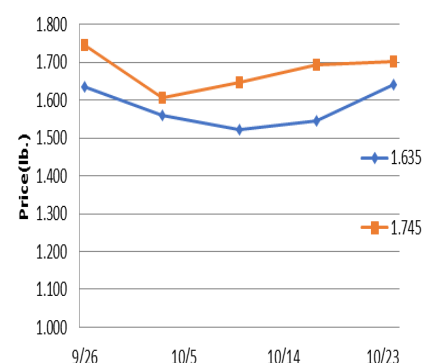


Beef, Veal and Lamb Report - Last week beef production declined 2% from the previous week and was .7% below a year ago. Despite modestly heavier carcasses from a year ago, output was hampered by smaller than expected slaughter. Given larger feedlot placements this past summer, total on-feed cattle are record large, and front-end supplies are projected to remain ample. The USDA is calling Q4 beef production to be up 2.9% (yoy). Beef demand remains brisk, with the four-week average of forward sales 3.3% better than last year. Choice ribeye and tenderloin prices are running well above a year ago but are expected to seasonally peak in the late fall. The boneless beef trim markets continue to languish near two-year lows.

October 25, 2018



81/19 Ground Beef



*This data and these comments are provided for information purposes only and are not intended to be used for specific trading strategies. Past financial results are not necessarily indicative of future performance. Any examples given are strictly hypothetical and no representation is being made that a person will or is likely to achieve profits or losses similar to those examples. Neither the information, nor any opinion expressed constitutes a solicitation to buy or sell futures or options on futures contracts or OTC products. Covered parties (as defined below) shall not be liable for any direct, indirect, incidental, special or consequential damages of any kind, whatsoever (including attorney's fees and lost profits or savings) in any way due to, resulting from, or arising in connection with the Market Trends Report, including its content, regardless of any negligence of the covered party including but not limited to technical inaccuracies and typographical errors. "Covered Parties" is defined as American Restaurant Association Inc., ARA Trading and the employees of both companies. Commodity trading involves risks, and you should fully understand those risks before trading. ©2014 American Restaurant Association Inc. This publication is protected under U.S. copyright law. Please do not redistribute without permission. Thank you.

Market Report provided by Arrowstream
www.arrowstream.com
 312-267-4400

Product Description	Market Trend	Supplies	Price vs. Last Year
Live Cattle (Steer)	Decreasing	Short	Lower
Feeder Cattle Index (CME)	Decreasing	Short	Higher
Ground Beef 81/19	Increasing	Good	Lower
Ground Chuck	Increasing	Good	Lower
109 Export Rib (ch)	Increasing	Good	Higher
109 Export Rib (pr)	Decreasing	Good	Lower
112a Ribeye (ch)	Increasing	Good	Higher
112a Ribeye (pr)	Increasing	Good	Higher
114a Chuck , Shlder Cld(ch)	Decreasing	Good	Higher
116 Chuck (sel)	Increasing	Good	Lower
116 Chuck (ch)	Increasing	Good	Higher
116b Chuck Tender (ch)	Increasing	Good	Lower
120 Brisket (ch)	Increasing	Good	Higher
120a Brisket (ch)	Decreasing	Good	Lower
121c Outside Skirt (ch/sel)	Increasing	Good	Higher
121d Inside Skirt (ch/sel)	Increasing	Good	Higher
121e Cap & Wedge	Increasing	Good	Higher
167a Knuckle, Trimmed (ch)	Increasing	Good	Higher
168 Inside Round (ch)	Increasing	Good	Higher
169 Top Round (ch)	Increasing	Good	Higher
171b Outside Round (ch)	Increasing	Good	Higher
174 Short Loin (ch 0x1)	Increasing	Good	Higher
174 Short Loin (pr 2x3)	Increasing	Good	Lower
180 0x1 Strip (ch)	Decreasing	Good	Lower
180 0x1 Strip (pr)	Decreasing	Good	Lower
184 Top Butt, boneless (ch)	Decreasing	Good	Higher
184 Top Butt, boneless (pr)	Increasing	Good	Lower
184-3 Top Butt, bnls (ch)	Increasing	Good	Higher
185a Sirloin Flap (ch)	Increasing	Good	Higher
185c Loin, Tri-Tip (ch)	Increasing	Good	Higher
189a Tender (sel, 5 lb & up)	Increasing	Good	Higher
189a Tender (ch, 5 lb & up)	Increasing	Good	Higher
189a Tender (pr, heavy)	Increasing	Good	Lower
193 Flank Steak (ch)	Decreasing	Good	Higher
50% Trimmings	Increasing	Good	Lower
65% Trimmings	Increasing	Good	Lower
75% Trimmings	Steady	Good	Lower
85% Trimmings	Increasing	Short	Lower
90% Trimmings	Decreasing	Short	Lower
90% Imported Beef (frz)	Decreasing	Good	Lower
95% Imported Beef (frz)	Decreasing	Good	Lower
Veal Rack (Hotel 7 rib)	Steady	Good	Higher
Veal Top Round (cap off)	Steady	Good	Higher