

ArrowStream

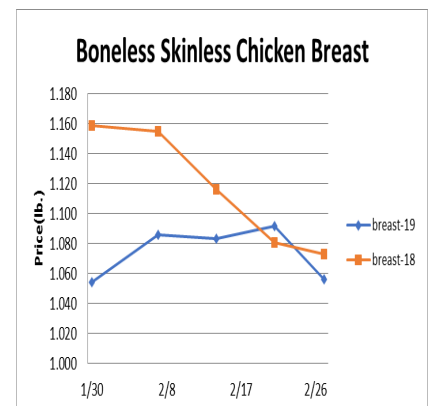
Poultry - For the week ending February 16th, chicken output was modestly below the week prior but down more than 1% year-over-year. Disparities remain between the slaughter categories, with small bird production down 3.6% throughout February compared with birds in the heavy weight category (7.75 lbs. and up) averaging .4% over a year ago for the month. After peaking more than 5% above the prior year leading up to the Super Bowl, wing prices have remained firm and above year ago levels. The chicken tender market increases appear to be slowing which isn't unusual in March, and seasonal declines are likely into early Q2. Chicken breast prices should remain firm.



Product Description	Market Trend	Supplies	Price vs. Last Year
Whole Birds WOG-Nat	Decreasing	Good	Lower
Wings (jumbo cut)	Decreasing	Good	Higher
Wing Index (ARA)	Decreasing	Good	Higher
Breast, Bnless Skinless NE	Decreasing	Good	Lower
Breast, Bnless Skinless SE	Decreasing	Good	Higher
Breast Boneless Index (ARA)	Decreasing	Good	Higher
Tenderloin Index (ARA)	Decreasing	Good	Higher
Legs (whole)	Increasing	Good	Higher
Leg Quarter Index (ARA)	Increasing	Good	Lower
Thighs, Bone In	Increasing	Good	Higher
Thighs, Boneless	Increasing	Good	Higher

Product Description	Increasing	Supplies	Lower
Large Eggs (dozen)	Decreasing	Short	Lower
Medium Eggs (dozen)	Steady	Short	Lower
Liquid Whole Eggs	Steady	Short	Lower
Liquid Egg Whites	Steady	Short	Higher
Liquid Egg Yolks	Steady	Short	Lower
Egg Breaker Stock Central	Decreasing	Short	Lower

Product Description	Market Trend	Supplies	Price vs. Last Year
Whole Turkey (8-16 lb)	Steady	Good	Higher
Turkey Breast, Bnls/Sknl	Decreasing	Good	Higher



Market Report provided by Arrowstream
www.arrowstream.com
312-267-4400